

Ophelia's Garden

Designed by Char Hopeman
Featuring the Ophelia collection by Nancy Gere
Size: 72" x 87"



Check www.windhamfabrics.com Free Project section to see if there are any pattern updates before you start your quilt project



WINDHAM FABRICS

812 Jersey Ave ~ Jersey City, NJ 07310 ~ 201.659.0444 ~ FAX: 201.659.9719
www.windhamfabrics.com email: retail@windhamfabrics.com

Ophelia's Garden

Page 2



40348-1



40348-2



40348-3



40349-1



40349-2



40349-3



40350-1



40351-1



40351-3



40352-1



40352-3



40354-3



40354-4



40354-5



40355-2



40355-4



40356-2



40357-1



40357-3

FABRIC REQUIREMENTS

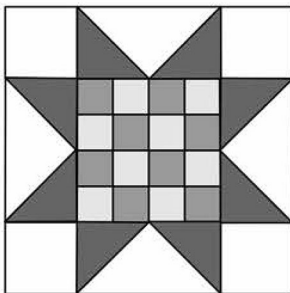
3/4 yard 40348-1 Terracotta
 1/2 yard 40348-2 Green
 3/4 yard 40348-3 Cocoa
 2 yards 40349-1 Terracotta
 1/2 yard 40349-2 Green
 1/4 yard 40349-3 Cocoa
 1 1/4 yards 40350-1 Terracotta
 1/4 yard. 40351-1 Terracotta
 1/8 yard 40351-3 Cocoa
 1/4 yard 40352-1 Terracotta

3/4 yard 40352-3 Cocoa
 1 1/2 yards 40354-3 (includes binding)
 1/4 yard 40354-4 Gold
 1/4 yard 40354-5 Cream
 1/8 yard 40355-2 Green
 1/4 yard 40355-4 Gold
 1/8 yard 40356-2 Green
 1/4 yard 40357-1 Terracotta
 1 1/4 yards 40357-3 Cocoa

Sewing Instructions

Star block A Instructions

This star has a checkerboard center. You will make it in three different colorways.



WINDHAM FABRICS

Ophelia's Garden

Page 3

Sewing Instructions cont.

Make **10** of these blocks in the following color combination.

40349-1 - Star points - cut 80 - $2\frac{3}{4}$ " squares

40348-1 - Background - cut 40 - $2\frac{3}{4}$ " squares and 40 - $2\frac{3}{4}$ "x 5" rectangles

40352-1 - Checkerboard - cut 80 - $1\frac{5}{8}$ " squares

40354-5 - Checkerboard - cut 80 - $1\frac{5}{8}$ " squares

Make **7** of these blocks in the following color combination.

40349-2 - Star points - cut 56 - $2\frac{3}{4}$ " squares

40348-2 - Background - cut 28 - $2\frac{3}{4}$ " squares and 28 - $2\frac{3}{4}$ "x 5" rectangles

40351-1 - Checkerboard - cut 56 - $1\frac{5}{8}$ " squares

40352-3 - Checkerboard - cut 56 - $1\frac{5}{8}$ " squares

Make **3** of these blocks in the following color combination.

40355-2 - Star points - cut 24 - $2\frac{3}{4}$ " squares

40348-2 - Background - cut 12 - $2\frac{3}{4}$ " squares and 12 - $2\frac{3}{4}$ "x 5" rectangles

40352-3 - Checkerboard - cut 24 - $1\frac{5}{8}$ " squares

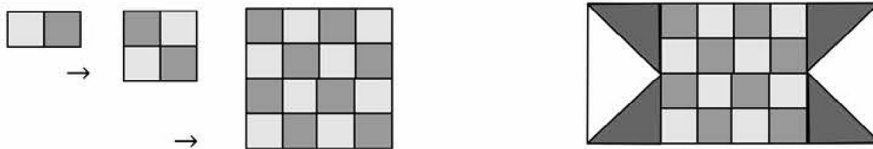
40354-3 - Checkerboard - cut 24 - $1\frac{5}{8}$ " squares

For each star block, using the four $2\frac{3}{4}$ "x 5" background rectangles and the 8 - $2\frac{3}{4}$ " star point squares, make four star point sections using the stitch and flip technique.



Sew the $1\frac{5}{8}$ " checker board squares together.

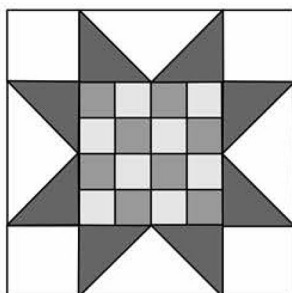
Sew a star point section to each side. Press the seams toward the checkerboard.



Sew a $2\frac{3}{4}$ " background square to the ends of two of the star point sections. Press the seams toward the background squares.



Sew these to the top and bottom of the star block. Press the seams toward the checkerboard center.



WINDHAM FABRICS

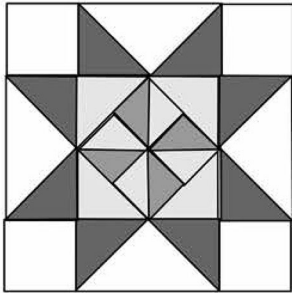
Ophelia's Garden

Page 4

Sewing Instructions cont.

Star block B Instructions

This star has a pinwheel on point for the center. You will make it in two different colorways.



Make 6 of these stars in the following color combination.

40355-4 - Star points - cut 48 - $2\frac{3}{4}$ " squares

40348-3 - Background - cut 24 - $2\frac{3}{4}$ " squares and 24 - $2\frac{3}{4}$ "x 5" rectangles

40356-2 - Pinwheel - cut 12 - $2\frac{1}{2}$ " squares

40357-1 - Pinwheel background - cut 12 - $2\frac{1}{2}$ " squares and 12 - $3\frac{1}{8}$ " squares

Make 6 of these stars in the following color combination.

40354-4 - Star points - cut 48 - $2\frac{3}{4}$ " squares

40348-3 - Background - cut 24 - $2\frac{3}{4}$ " squares and 24 - $2\frac{3}{4}$ "x 5" rectangles

40351-3 - Pinwheel - cut 12 - $2\frac{1}{2}$ " squares

40352-3 - Pinwheel background - cut 12 - $2\frac{1}{2}$ " squares and 12 - $3\frac{1}{8}$ " squares

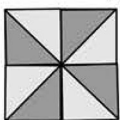
For each star block, using the $2\frac{3}{4}$ "x 5" background rectangles and the $2\frac{3}{4}$ " star point squares, make four star point sections using the stitch and flip technique.



Lay a $2\frac{1}{2}$ " pinwheel background square and a $2\frac{1}{2}$ " pinwheel square right sides together. Draw a diagonal line on the back of the background square. Sew $\frac{1}{4}$ " from both sides of the drawn line. Cut on the drawn line. Press the seam toward the pinwheel fabric.



Sew the pieced triangles into a pinwheel block.

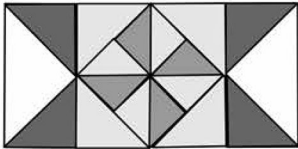


Ophelia's Garden

Page 5

Sewing Instructions cont.

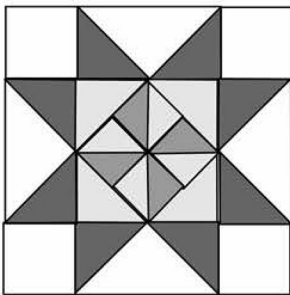
Sew a star point section to the sides of this pinwheel block. Press the seams toward the pinwheel.



Sew a $2\frac{3}{4}$ " background square to the ends of two of the star point sections. Press the seams toward the background squares.



Sew these to the top and bottom of the star block. Press the seams toward the pinwheel center.



Sashing and Cornerstones

40357-3

Cut 4 – $9\frac{1}{2}$ "w strips. Cut these into 80 – 2 "x $9\frac{1}{2}$ " sashing.

40354-3

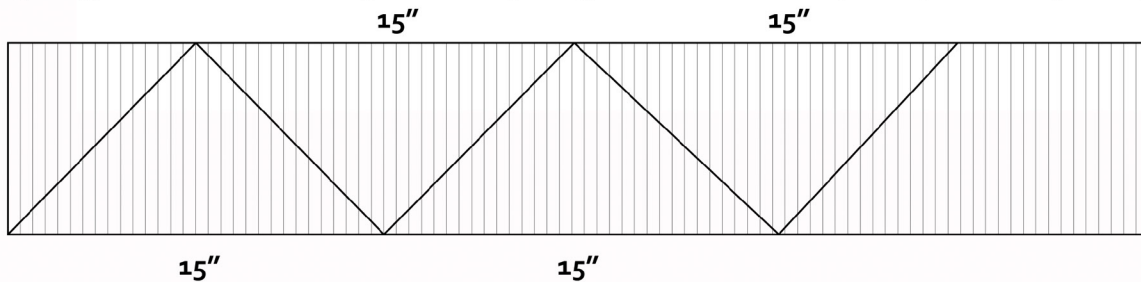
Cut 21 – 2 "w strips. Cut these into 31 – 2 " squares.

Cut 1 – $2\frac{3}{8}$ "w strips. Cut these into 9 – $2\frac{3}{8}$ " squares. Cut these into 18 half-square triangles.

Setting Triangles

40350-1

Cut 4 – $7\frac{3}{4}$ "w strips. Cut one end of each strip on a 45° angle. Measure 15 " and make another cut at a reverse 45° angle. Continue measuring and cutting along each strip in this way until you have 14 setting triangles.

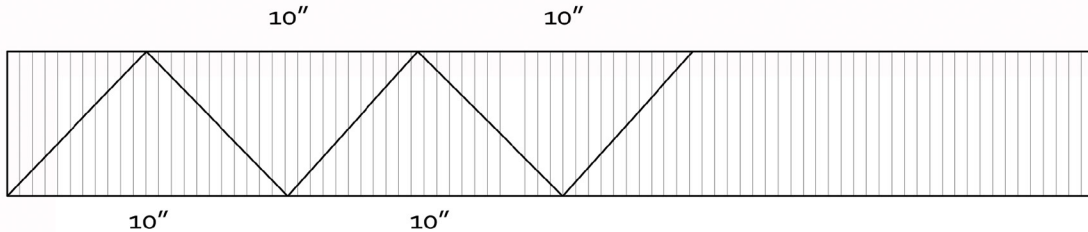


WINDHAM FABRICS

Ophelia's Garden

Page 6

Cut 1 – 5" w strip. From this strip cut the on on a 45° angle as you did for the above strip. Measure 10" and cut a reverse 45° angle. Cut 4. These are your corners.



Using the photo for block placement, sew the blocks into diagonal rows with the sashing. Add the setting triangles to the ends of the rows. Press the seams toward the sashing.

Sew the rows of sashing and cornerstones using the 2" cornerstones and the $2\frac{3}{8}$ " half-square triangles.

Sew the block rows and the sashing rows together. Press the seams toward the sashing rows.

Sew the 4 Corner triangles onto the corners of the quilt top. Press the seams toward the triangles.

Border

40349-1 - Cut 8 – 6" w strips.

Sew all of the strips together into one long strip. Measure the length of the quilt top. Cut two border strips this length. Sew them to the sides of the quilt top. Press the seams toward the border strips.

Measure the width of the quilt top. Cut two border strips this length. Sew them to the top and bottom of the quilt top. Press as before.

Finishing

Piece the backing fabric. Press the seams open.

Layer the backing, batting and quilt top. Baste and quilt as desired.

40354-3 – Cut 8 – $2\frac{1}{4}$ " w strips. Bind your quilt.

ENJOY!!!

Be sure to visit www.windhamfabrics.com to see the complete collection and to download this and other Free Projects

